



P R O L I P H I X

# Internet HVAC Control

NT100

## PROFESSIONAL SERIES THERMOSTAT

### NT100

#### Single & Dual Stage Heat/Cool Control with:

- **Integral Web Server Technology—No Additional Software**



#### Product Highlights

- Web Browser Configuration
- E-mail Status and Fault Reporting
- Secure Internet Monitoring and Control
- Reliable TCP/IP Communications
- Wired Ethernet
- UL & ENERGY STAR Rated

**Professional Series Network Thermostats** Proliphix Network Thermostats take full advantage of ubiquitous Ethernet networks and the Internet to utilize the converged in-home or business network for HVAC control. The Proliphix Network Thermostat product line is compatible with typical HVAC systems and offers all the features expected by home system integrators and commercial installers. Internet connectivity and the thermostat's browser interface offer unprecedented ease of configuration, monitoring and management capabilities at a fraction of the cost of current programmable communicating thermostats.

**Secure, Remote Monitoring and Management** Proliphix Network Thermostats feature standard Internet browser-based configuration and control over a secure Ethernet connection. Remote management and monitoring are available over secure and authorized broadband connections to the Internet. Proliphix Network Thermostats can deliver e-mail status and alerts<sup>1</sup> to any personal computer or mobile text messaging device. A service provider or monitoring service can monitor, diagnose and control HVAC systems from a remote central location. This allows the provider to offer unprecedented energy management and service to its customers, and creates new service revenue opportunities.

**NT100** The NT100 is Proliphix's basic Professional Series Thermostat. It provides standard features which match those found on sophisticated energy management control systems. The NT100 provides heat, cool and advanced fan control for a single zone in standard HVAC systems and can be configured to control heat only, cool only or independent heating and cooling systems.

Note 1: With *FREE* subscription to Proliphix Remote Management Service.

#### Features

##### Compatible with most HVAC Systems

- Fossil Fuel – 1h/1c to 2h/2c
- Heat Pumps – 1h/1c
- Heat Pumps w/Aux Heat – 2h/1c

##### Single/Dual Stage Heat & A/C Support

##### Fahrenheit/Celsius Support

##### Modes: Heat, Cool, Auto Changeover, Off

##### Fan Control: Man, Auto, and Scheduled

##### Keypad Lockout w/Override Limits

##### HVAC Control

- Heat/Cool Cycle Limits/hr
- Configurable Setpoint Deadband
- Fan Control on Heat
- Hold Mode Adjustable Timeout

##### Flexible Temperature Scheduling

- 366 Day Programming
- 4 Temperature Periods per Day
- Special Day Schedules

##### E-mail or Text Message Reporting<sup>1</sup>

- High and Low Temperature Alarm
- Filter Change Reminder

##### Network Settings

- Secure Password Authentication
- Static/DHCP Addressing
- Class A, B, C Addressing
- Network Access Filters
- Syslog Messaging

##### Multiple Power Options

- HVAC Power
- Power over Ethernet (802.3af)
- Proliphix Network Power

##### Daylight Savings Support

##### Failsafe Low Temperature Switch

##### Clear, Backlit Graphic LCD

##### ENERGY STAR Compliant

#### Benefits

##### Enhanced Cost Savings

- Remote Monitoring & Control
- Remote Diagnostics
- Remote Alarm Notification

##### Energy Management

- Demand Response Programs
- Multi-Site HVAC Management

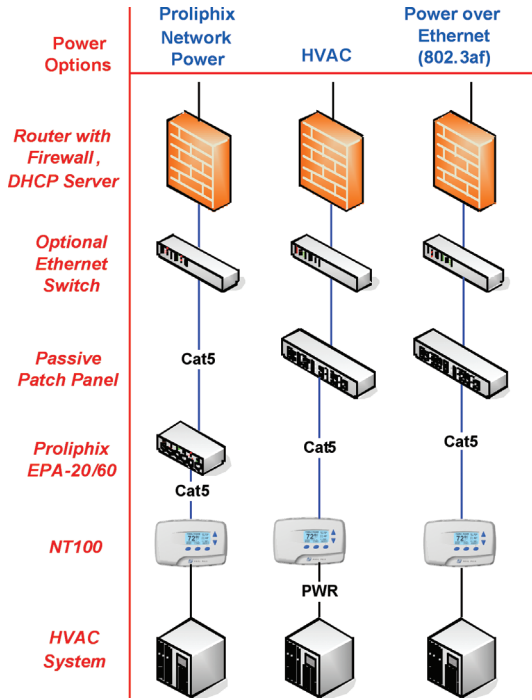


# PROFESSIONAL SERIES THERMOSTAT

## NT100 Single and Dual Stage Heat or Cool Control with: • Integral Web Server Technology–No Additional Software

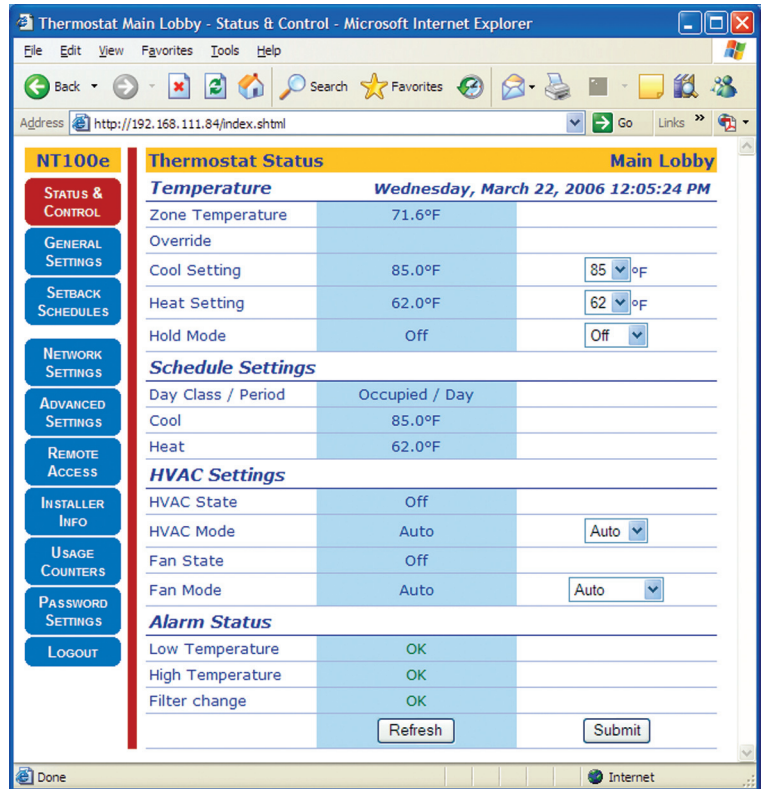
### Typical Network Installation

The Proliphix NT100 Network Thermostat is easily installed in a wired LAN environment by terminating conventional Cat5, Cat5e or Cat6 cable to the thermostat terminal block.



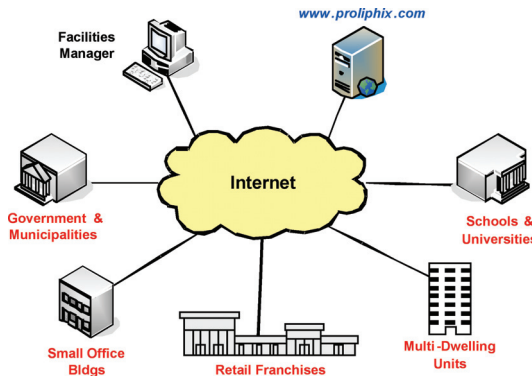
### Thermostat Management Interface (TMI)

The default status page is organized to clearly display the most important current status and settings of the NT100 thermostat.



### Remote Management

A facility manager can readily connect to any thermostat at any site by first authenticating at the Proliphix website to ensure security.



Power Options	NT100h	NT100e
HVAC System Power	X	
Power over Ethernet – 802.3af		X
Proliphix Network Power – EPA		X

Specifications
Operating Temperature: -10°C to +40°C
Dimensions: 5.5" x 3.5" x 1.5"
Shipping Dimensions: 7.5" x 5.5" x 2.25"
Weight: .75 lb
Agency Approvals: FCC, UL, ENERGY STAR
Warranty: 1 Year Limited Warranty

